

EUREKA APARTMENTS

DRAWING INDEX

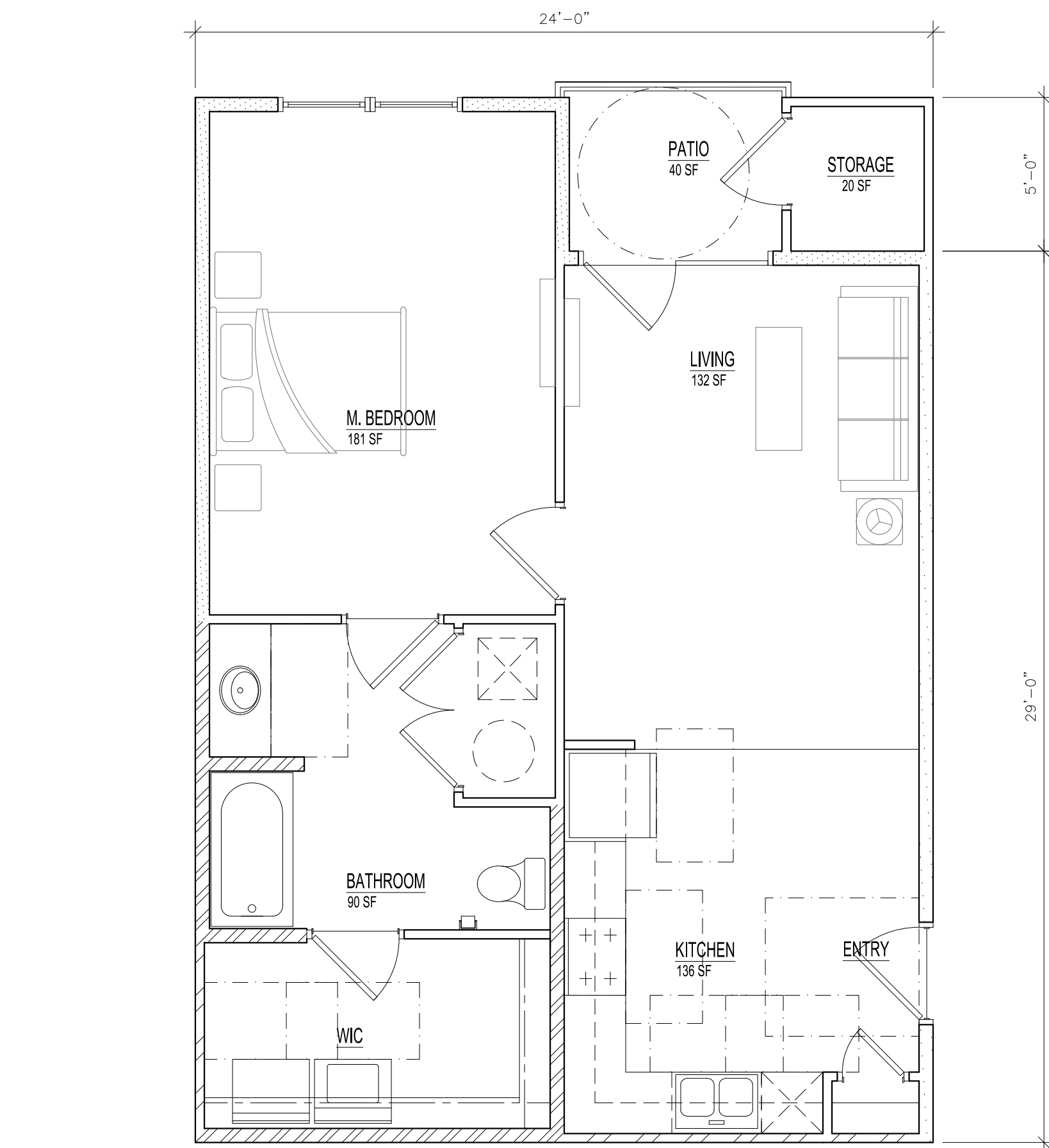
CS1	COVER SHEET
A1.1	A-2 UNIT PLANS
A1.2	B-1 UNIT PLANS
A1.3	C-1 UNIT PLANS
A1.4	BUILDING TYPE I - BUILDING PLAN
A1.5	BUILDING TYPE I - BUILDING PLAN
A1.6	BUILDING TYPE I - EXTERIOR ELEVATIONS
A1.7	BUILDING TYPE II - BUILDING PLAN
A1.8	BUILDING TYPE II - BUILDING PLAN
A1.9	BUILDING TYPE II - EXTERIOR ELEVATIONS & SECTION
A1.10	BUILDING TYPE II - EXTERIOR ELEVATIONS
A1.11	CLUBHOUSE PLAN
A1.12	CLUBHOUSE ELEVATIONS



**EUREKA
APARTMENTS**

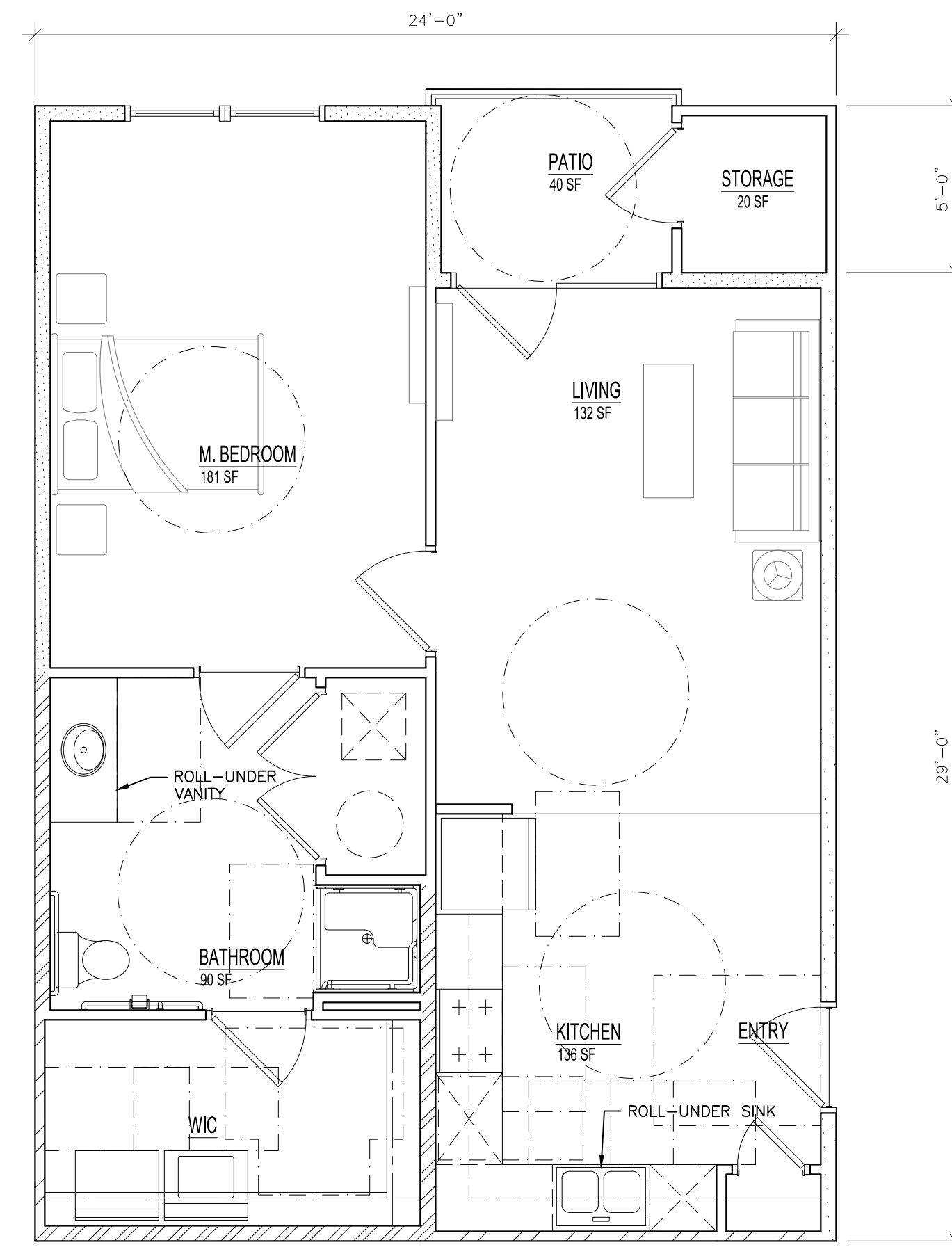
Apartment Building

CS1
COVERSHEET



02 FLOOR PLAN: A-2 Type B Unit
 1/4" = 1'-0"

GROSS AREA: 819 NET AREA: 759 SF
 (1/8" = 1'-0" when 11x17)



01 FLOOR PLAN: A-2 Type A Unit
 1/4" = 1'-0"

GROSS AREA: 819 NET AREA: 759 SF
 (1/8" = 1'-0" when 11x17)

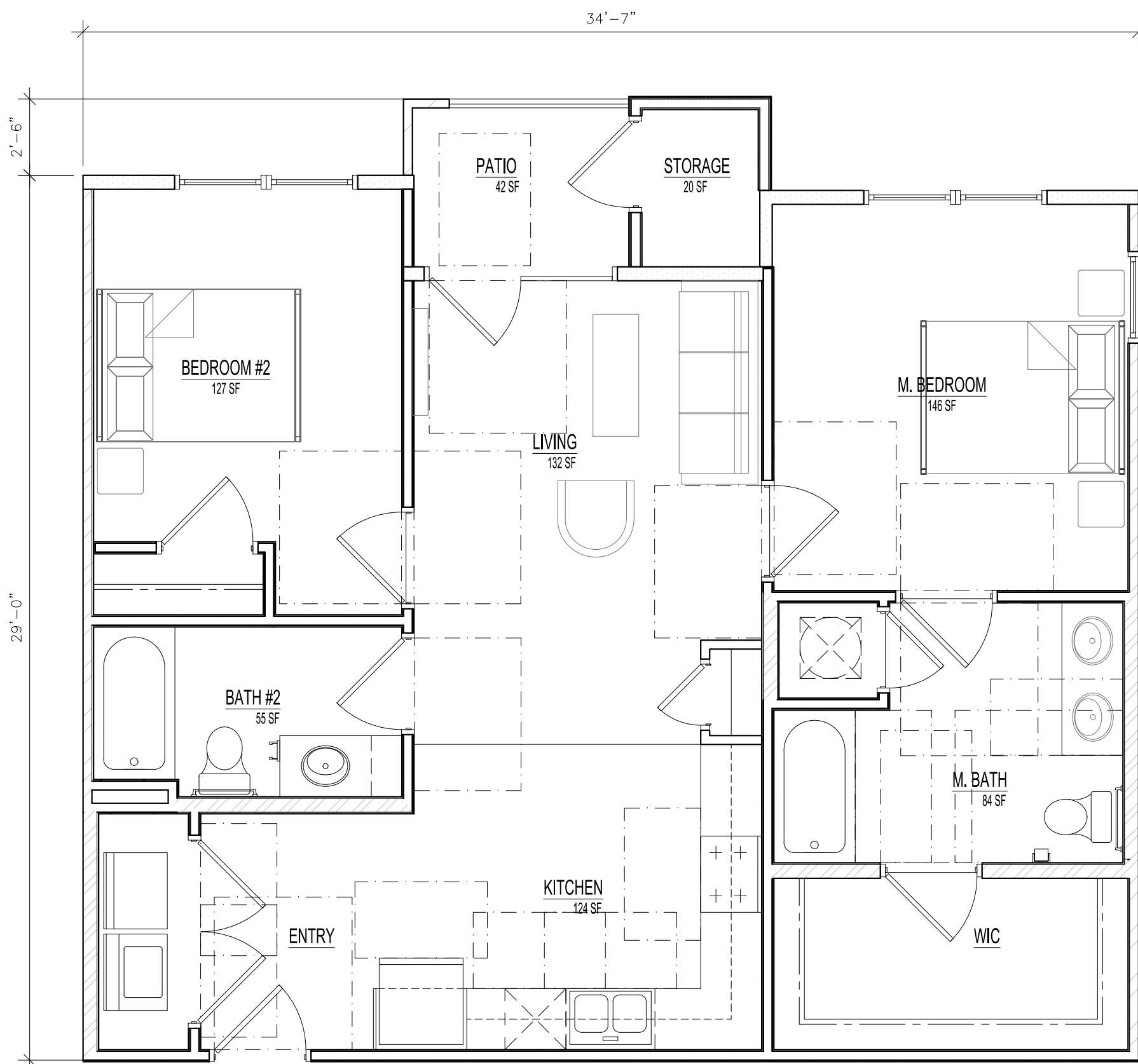
EUREKA APTS.

UNIT PLANS
 Schematic

- ☐ Approved
- ☐ Revise as noted

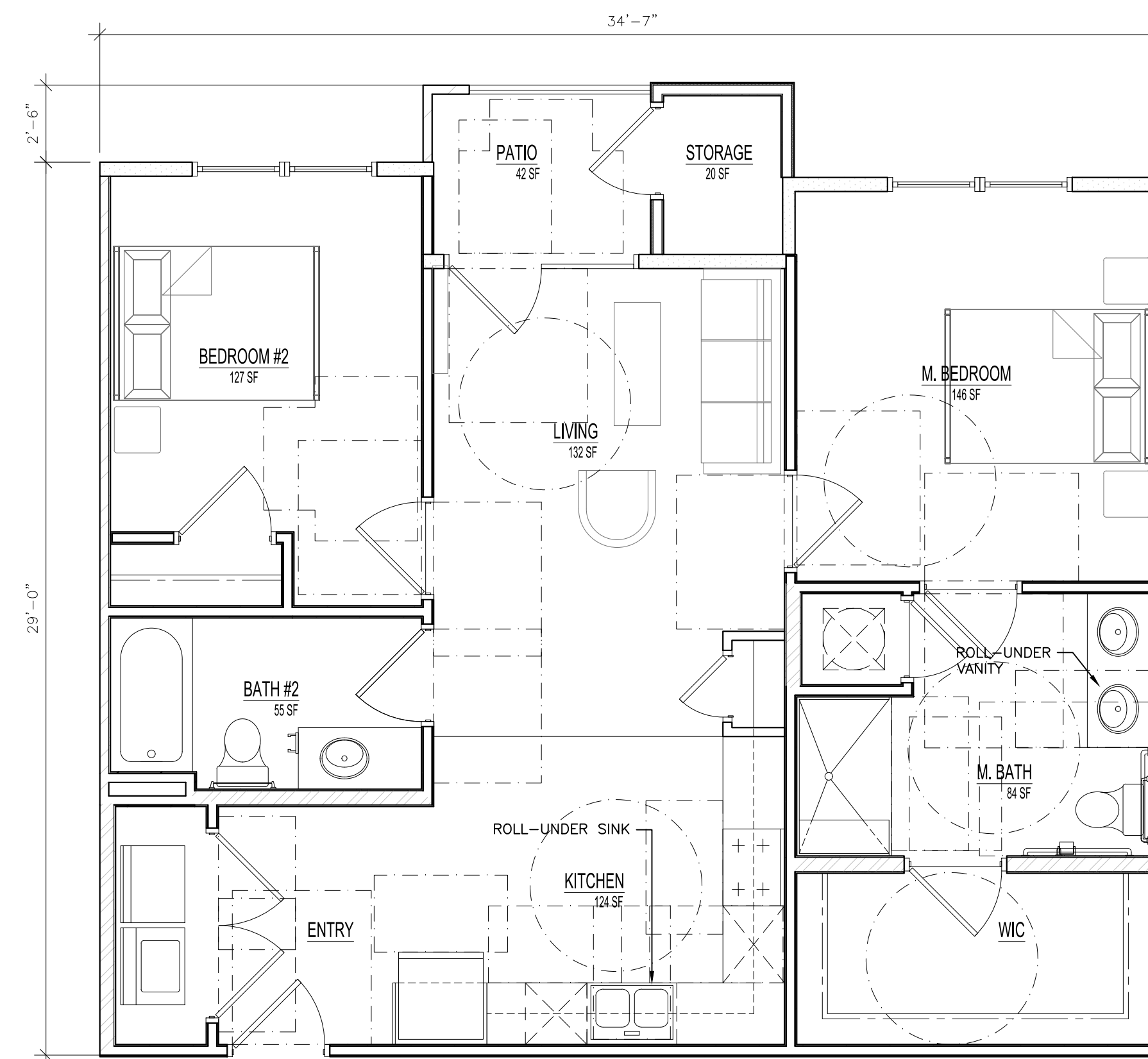


A1.1
 A-2 UNIT PLANS



02 FLOOR PLAN: B-1 Type B Unit
 1/4" = 1'-0"

GROSS AREA: 1,026 NET AREA: 964 SF
 (1/8" = 1'-0" when 11x17)



01 FLOOR PLAN: B-1 Type A Unit
 1/4" = 1'-0"

GROSS AREA: 1,026 NET AREA: 964 SF
 (1/8" = 1'-0" when 11x17)

EUREKA APTS.

UNIT PLANS
 Schematic

- ☐ Approved
- ☐ Revise as noted

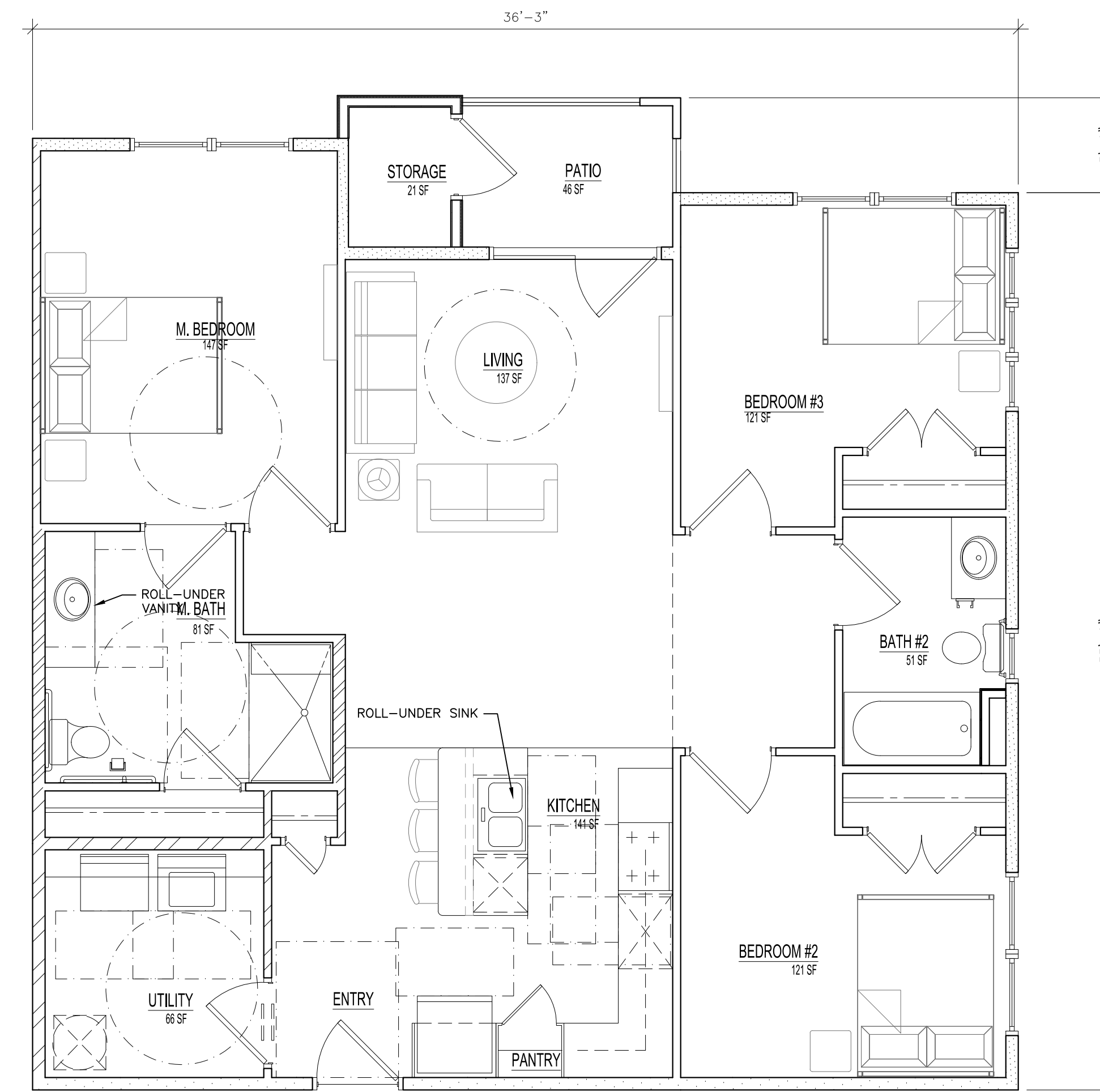


A1.2
 B-1 UNIT PLANS



02 FLOOR PLAN: C-1 Type B Unit

GROSS AREA: 1,263 NET AREA: 1,197 SF
(1/8" = 1'-0" when 11x17)



01 FLOOR PLAN: C-1 Type A Unit

GROSS AREA: 1,263 NET AREA: 1,197 SF
(1/8" = 1'-0" when 11x17)

EUREKA APTS.

UNIT PLANS
Schematic

- ☐ Approved
- ☐ Revise as noted



A1.3
C-1 UNIT PLANS



01 FLOOR PLAN: Building Type I First Floor Plan
1/8" = 1'-0"

Gross Building SF: 11,850 Net SF: 9,286
(1/8" = 1'-0" when 11x17)

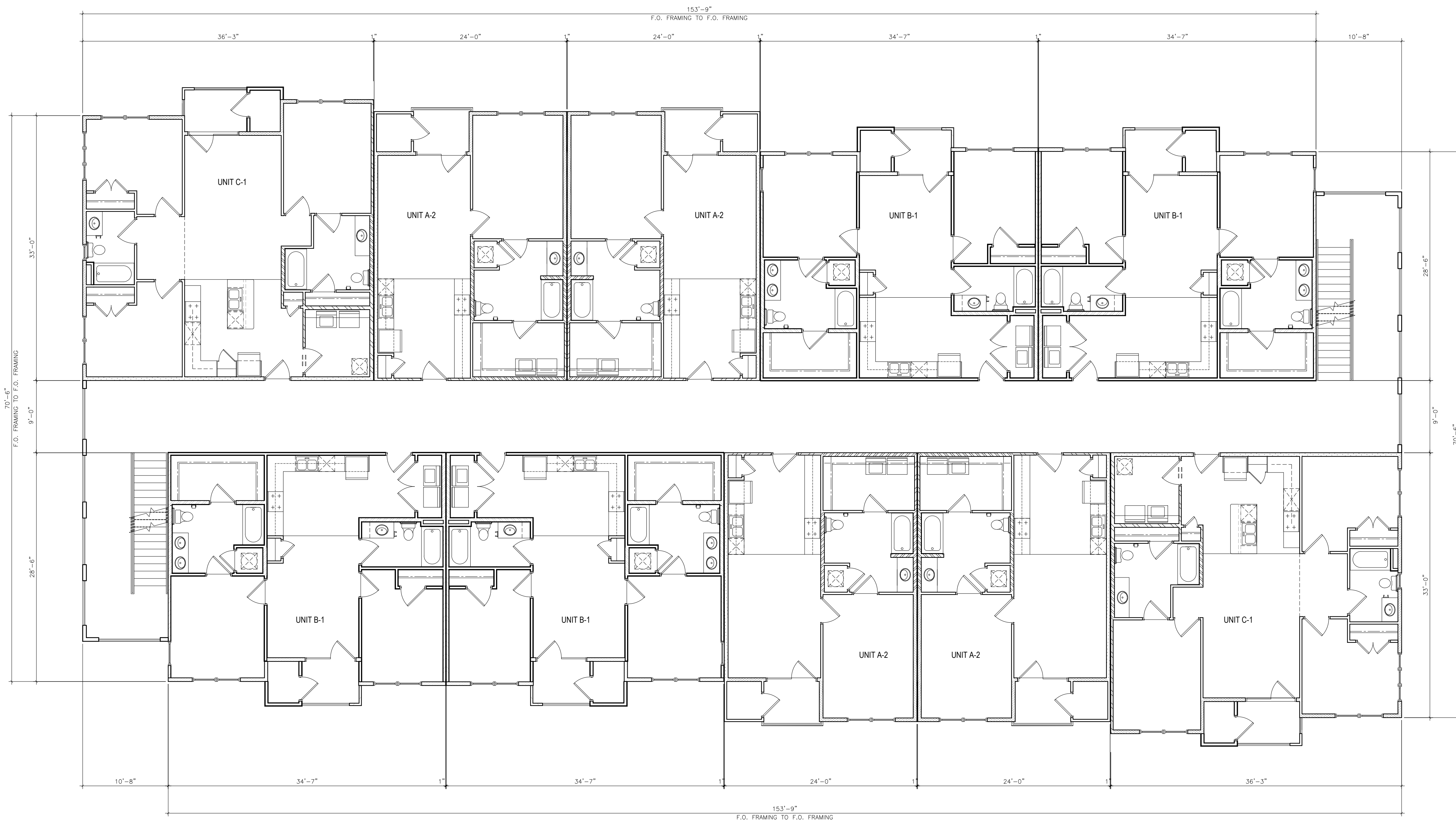
EUREKA APTS.

BUILDING PLANS
Schematic

- ☐ Approved
- ☐ Revise as noted



A1.4
BUILDING TYPE I PLAN



01 FLOOR PLAN: Building Type I Second/Third Floor Plan
 1/8" = 1'-0"

Gross Building SF: 11,726 Net SF: 9,286
 (1/8" = 1'-0" when 11x17)

EUREKA APTS.

BUILDING PLANS
 Schematic

- ☐ Approved
- ☐ Revise as noted



A1.5
 BUILDING TYPE I PLAN



02 ELEVATIONS: Building Type I - Right/Left
1/8" = 1'-0"

(1/8" = 1'-0" when 11x17)



01 ELEVATIONS: Building Type I - Front/Rear
1/8" = 1'-0"

(1/8" = 1'-0" when 11x17)

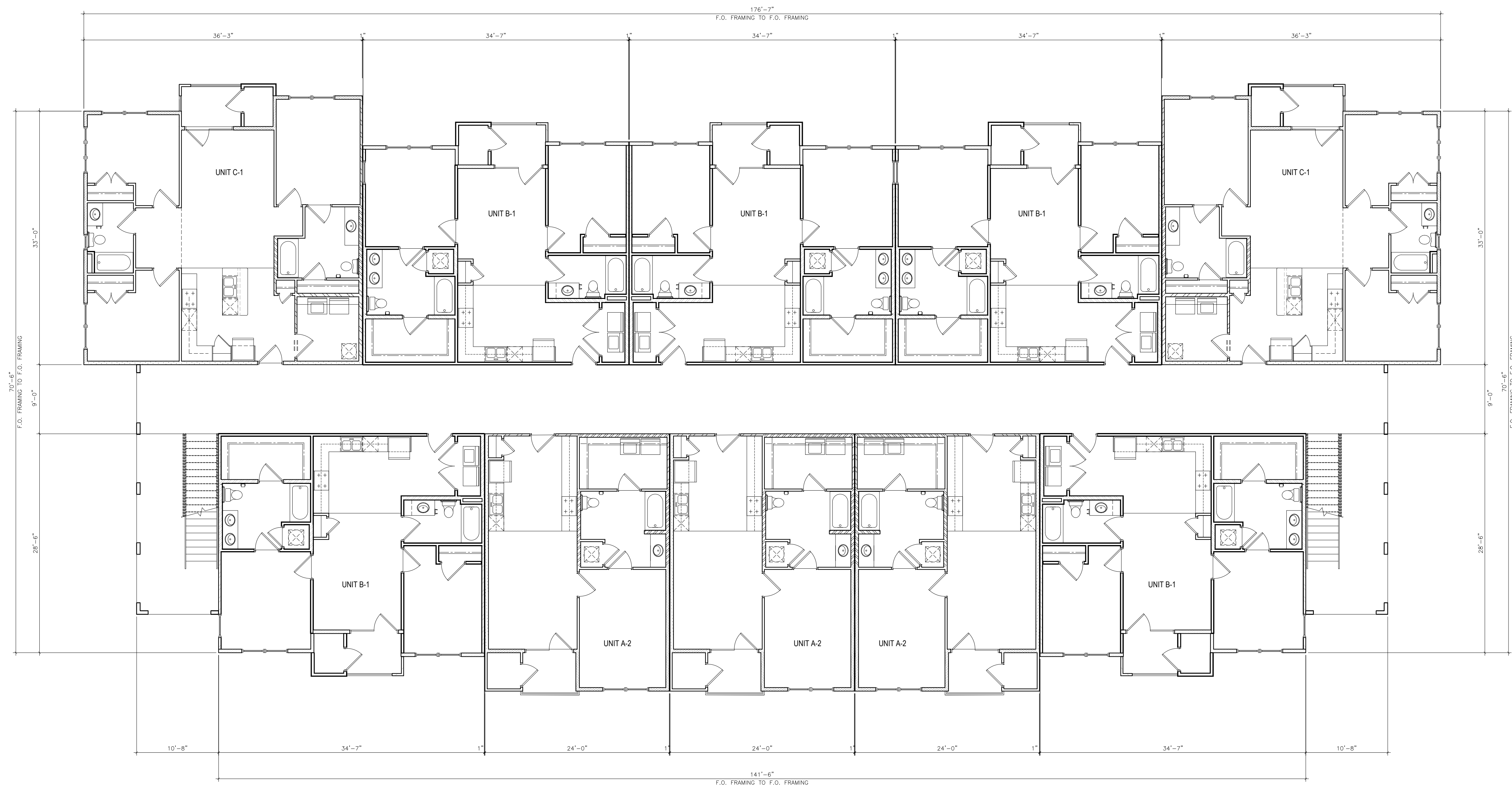
EUREKA APTS.

BUILDING ELEVATIONS
Schematic

- ☐ Approved
- ☐ Revise as noted



A1.6
BUILDING TYPE II ELEVATIONS



01 FLOOR PLAN: Building Type II First Floor Plan
 1/8" = 1'-0"

Gross Building SF: 12,058 Net SF: 9,491
 (1/8" = 1'-0" when 11x17)

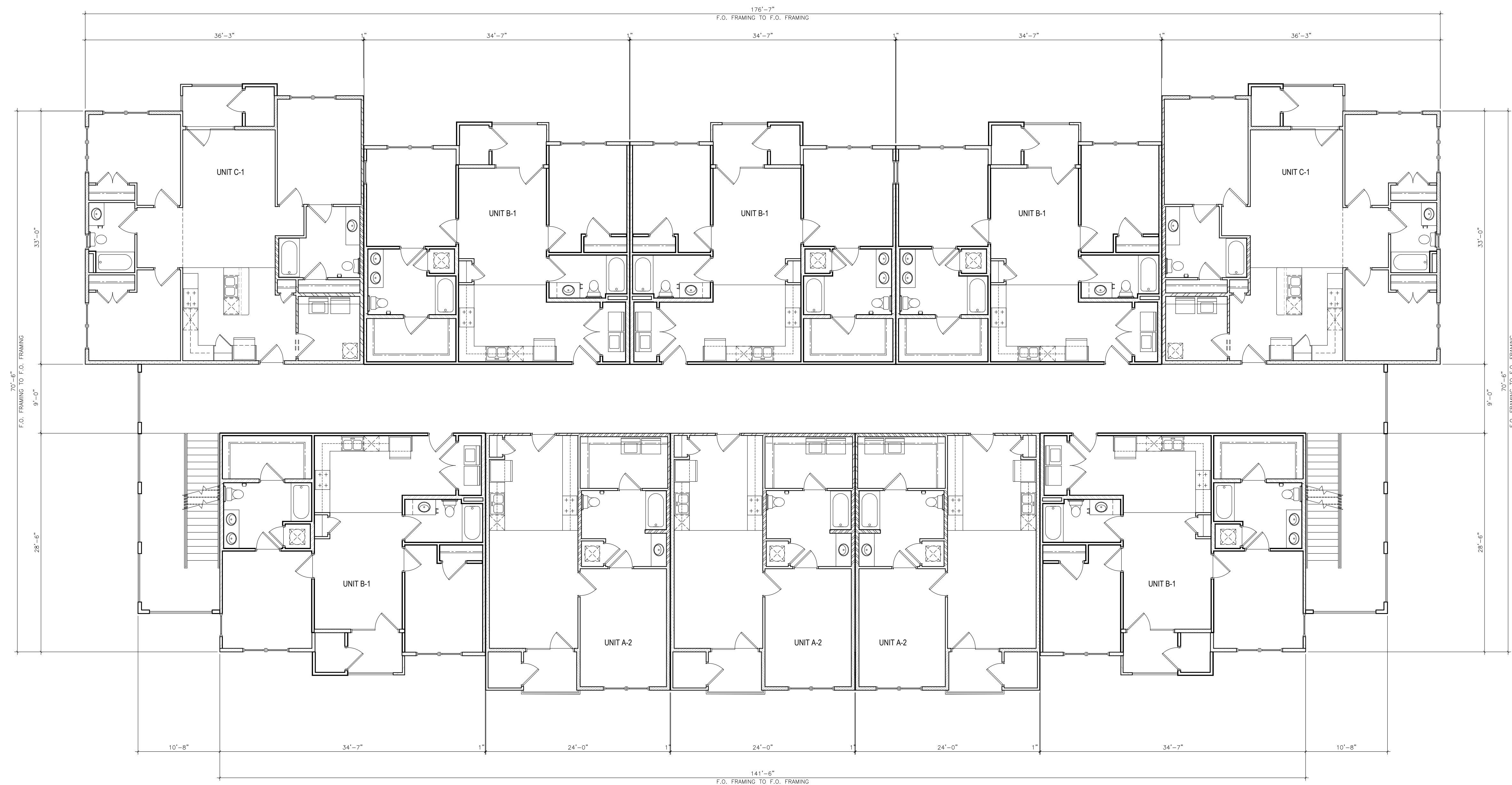
EUREKA APTS.

BUILDING PLANS
 Schematic

- ☐ Approved
- ☐ Revise as noted



A1.7
 BUILDING TYPE II PLAN



01 FLOOR PLAN: Building Type II Second/Third Floor Plan
 1/8" = 1'-0"

Gross Building SF: 11,934 Net SF: 9,491
 (1/8" = 1'-0" when 11x17)

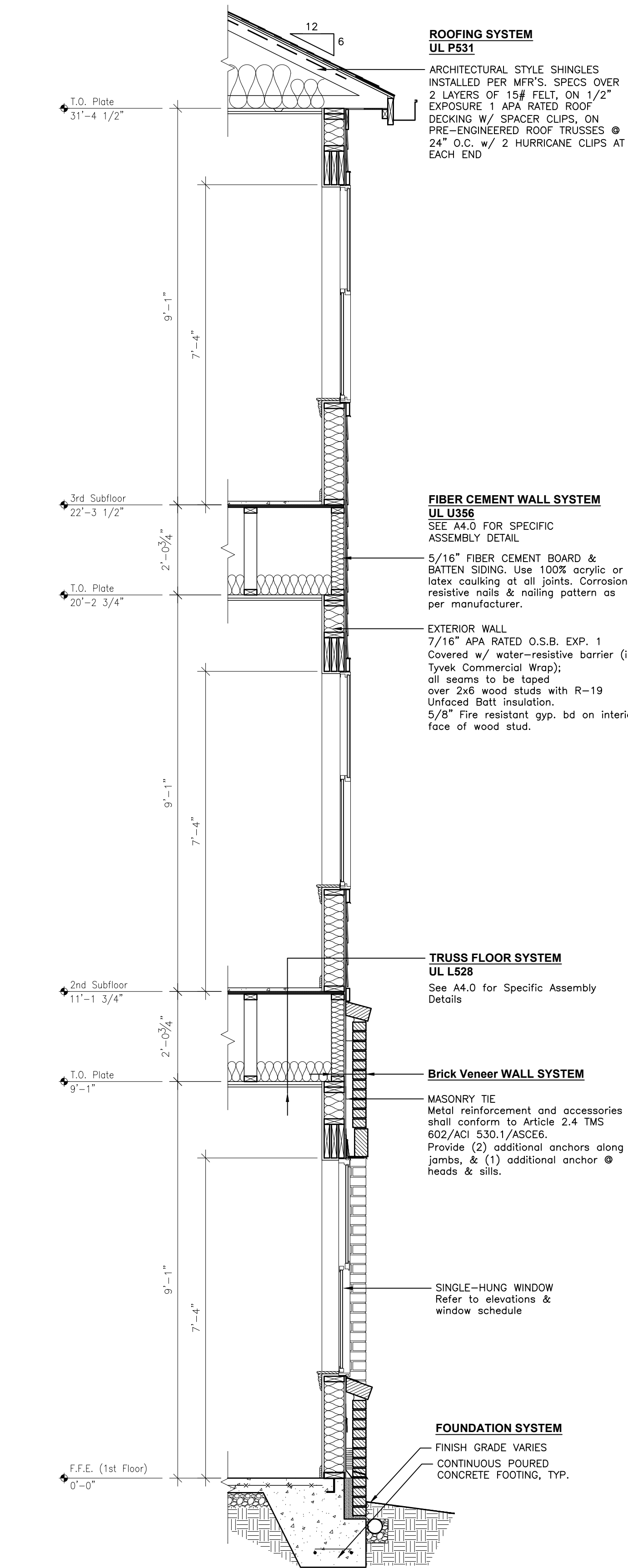
EUREKA APTS.

BUILDING PLANS
 Schematic

- ☐ Approved
- ☐ Revise as noted



A1.8
 BUILDING TYPE II PLAN



03 WALL SECTION: Typical
1/2" = 1'-0"



02 ELEVATIONS: Building Type II - Right
1/8" = 1'-0"

(1/8" = 1'-0" when 11x17)



01 ELEVATIONS: Building Type II - Front
1/8" = 1'-0"

(1/8" = 1'-0" when 11x17)

EUREKA APTS.

BUILDING ELEVATIONS
Schematic

- ☐ Approved
☐ Revise as noted



A1.9
BUILDING TYPE II ELEVATIONS



02 ELEVATIONS: Building Type II - Left
1/8" = 1'-0"



01 ELEVATIONS: Building Type II - Rear
1/8" = 1'-0"

(1/8" = 1'-0" when 11x17)

EUREKA APTS.
BUILDING ELEVATIONS
Schematic

- ☐ Approved
- ☐ Revise as noted



A1.10
BUILDING TYPE II ELEVATIONS

EUREKA APTS.

CLUBHOUSE PLAN
Schematic

- ☐ Approved
- ☐ Revise as noted

01 FLOOR PLAN: Clubhouse Floor Plan

1/8" = 1'-0"

(1/8" = 1'-0" when 11x17)

MAIL BOX EQUIPMENT & NOTES:

01 MAILBOX UNIT: Auth Florence 4C16D-20
(31' 9/16" Wide x 56' 1/2" High)
20 front loading A doors

1. PROVIDE 60 MIN. BOXES
All Accessible Mailboxes to be placed within
Reach Zone per 308.3.1, ICC/ANSI A117.1-2003

2. G.C. TO COORDINATE EXACT COUNT & BOX SIZE
WITH OWNER/PROPERTY MANAGER PRIOR TO
PURCHASE & INSTALLATION

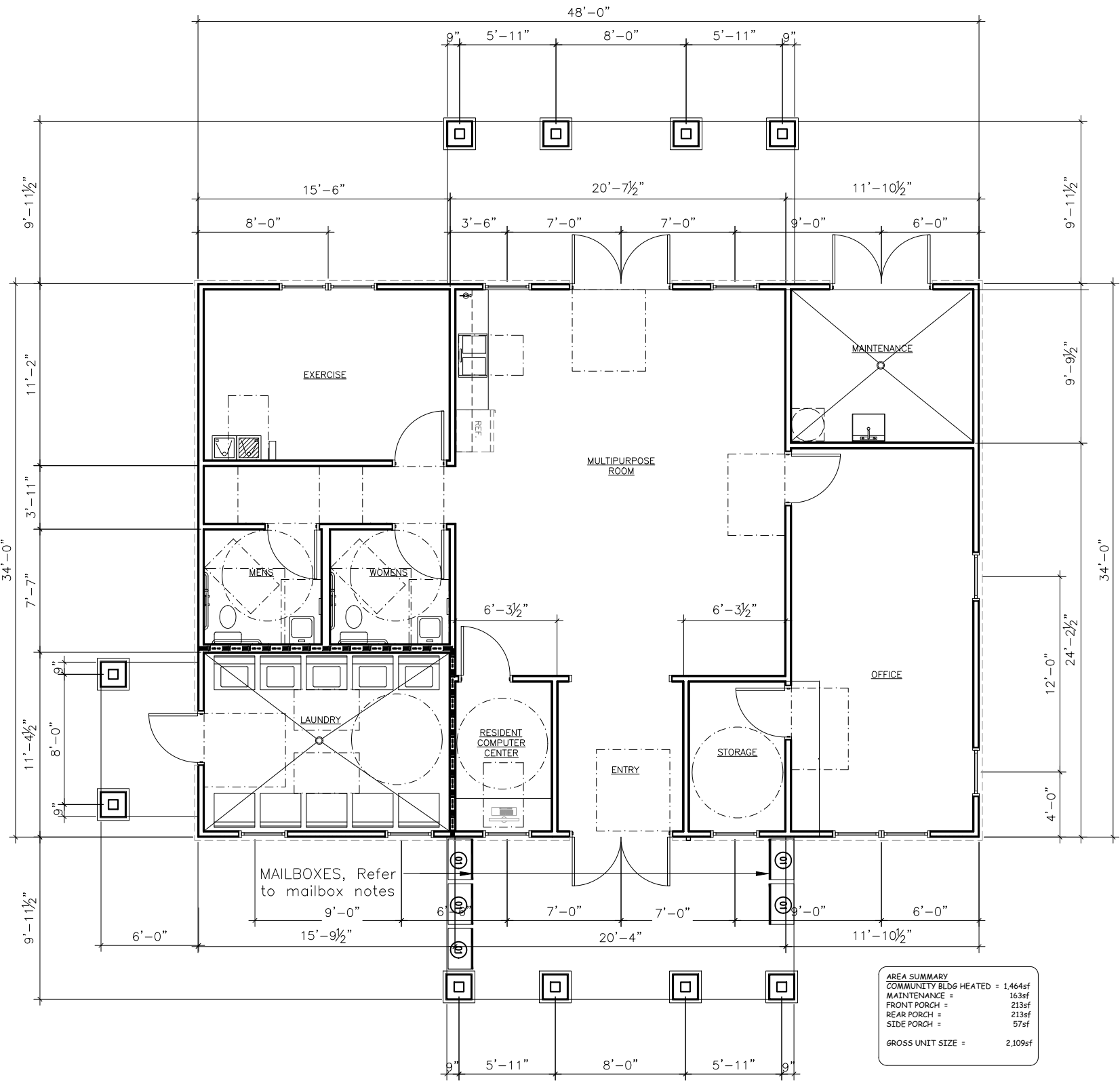
3. MAILBOXES TO BE INSTALLED PER USPS
REGULATIONS.

4. IF NOT LOCATED WITHIN THE BUILDING, THE POSTAL
FACILITY MUST:

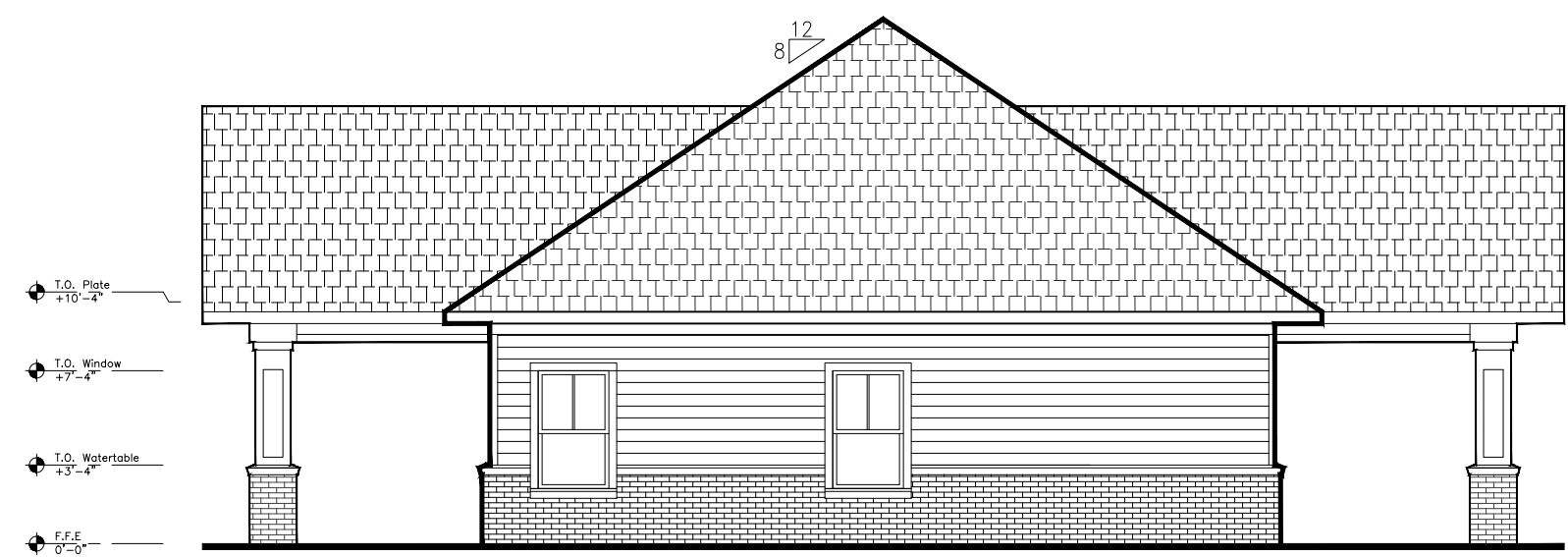
HAVE A ROOF COVERING WHICH OFFERS RESIDENTS
AMPLE WEATHER PROTECTION;

BE LOCATED ADJACENT TO AVAILABLE PARKING AND
SITED FOR SAFE ACCESS WHILE COLLECTING MAIL;
AND

HAVE ADEQUATE LIGHTING FUNCTIONING FROM DUSK
TO DAWN.



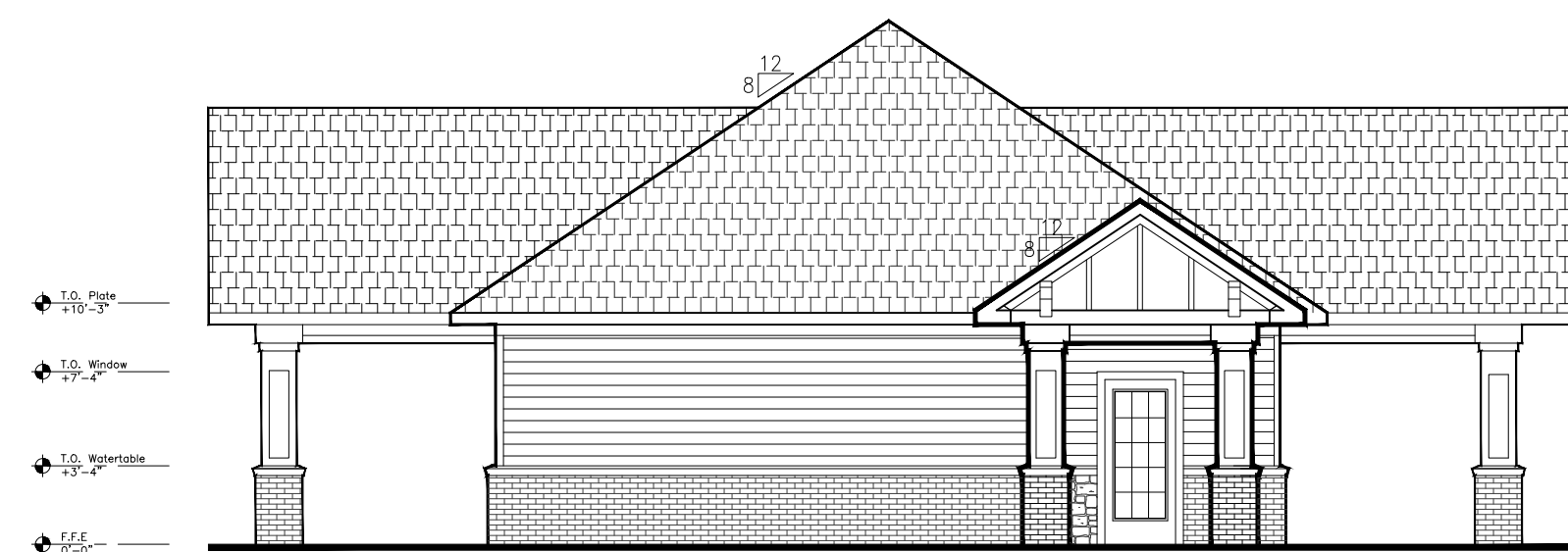
A1.11
CLUBHOUSE PLAN



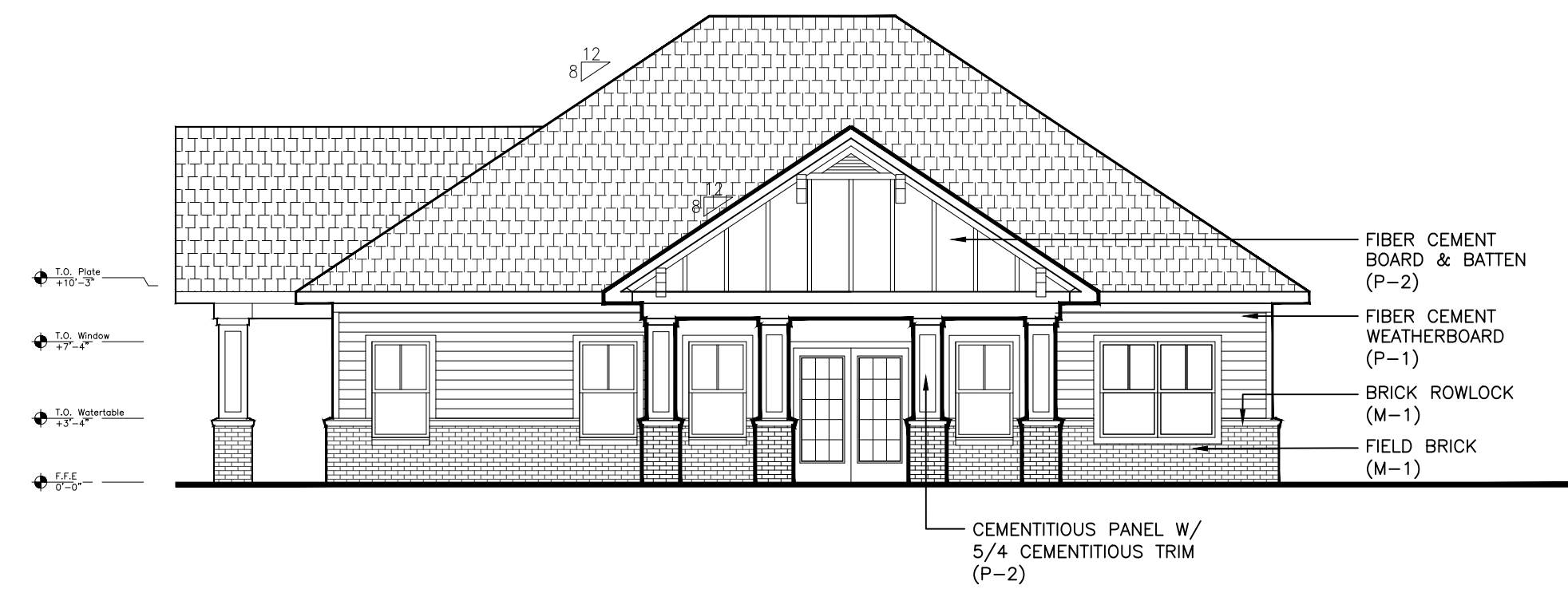
04 | **ELEVATIONS: Clubhouse - Right**
1/8" = 1'-0" (1/8" = 1'-0" when 11x17)



03 | **ELEVATIONS: Building Type I - Rear**
1/8" = 1'-0" (1/8" = 1'-0" when 11x17)



02 | **ELEVATIONS: Clubhouse - Left**
1/8" = 1'-0" (1/8" = 1'-0" when 11x17)



01 | **ELEVATIONS: Clubhouse - Front**
1/8" = 1'-0" (1/8" = 1'-0" when 11x17)